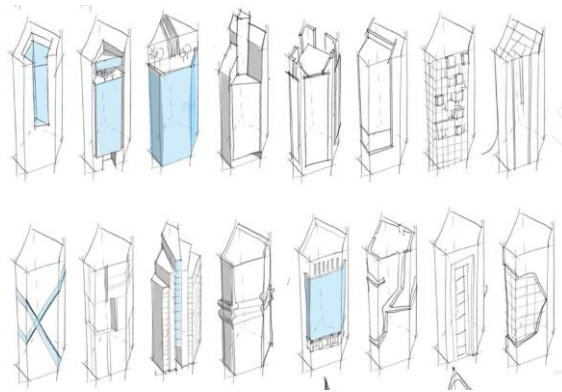


# SHOWCASES

In this part , the design process will be showing from the initial sketches till the final design for some selected projects, The Design method is providing end-less solutions for designs



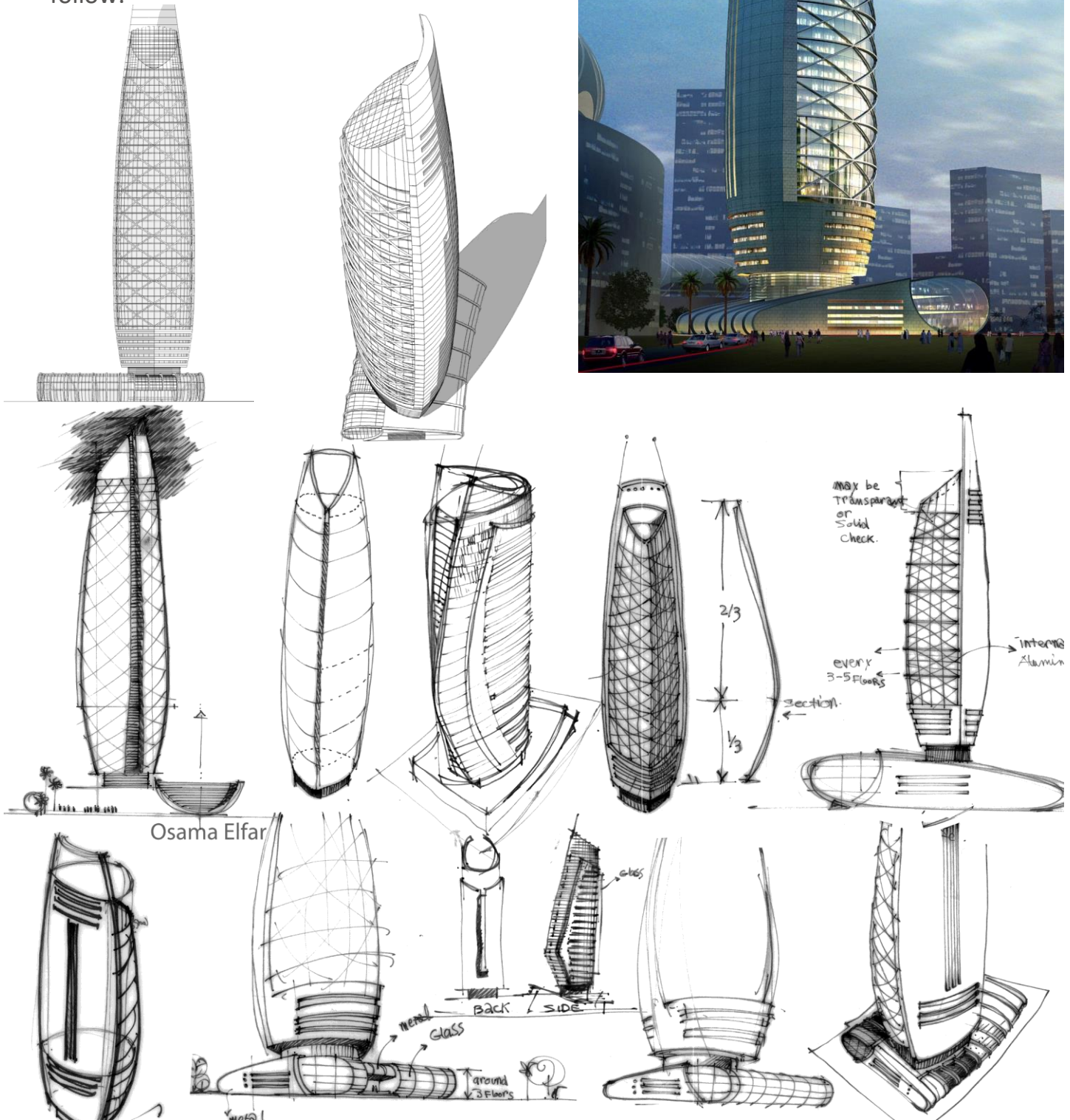
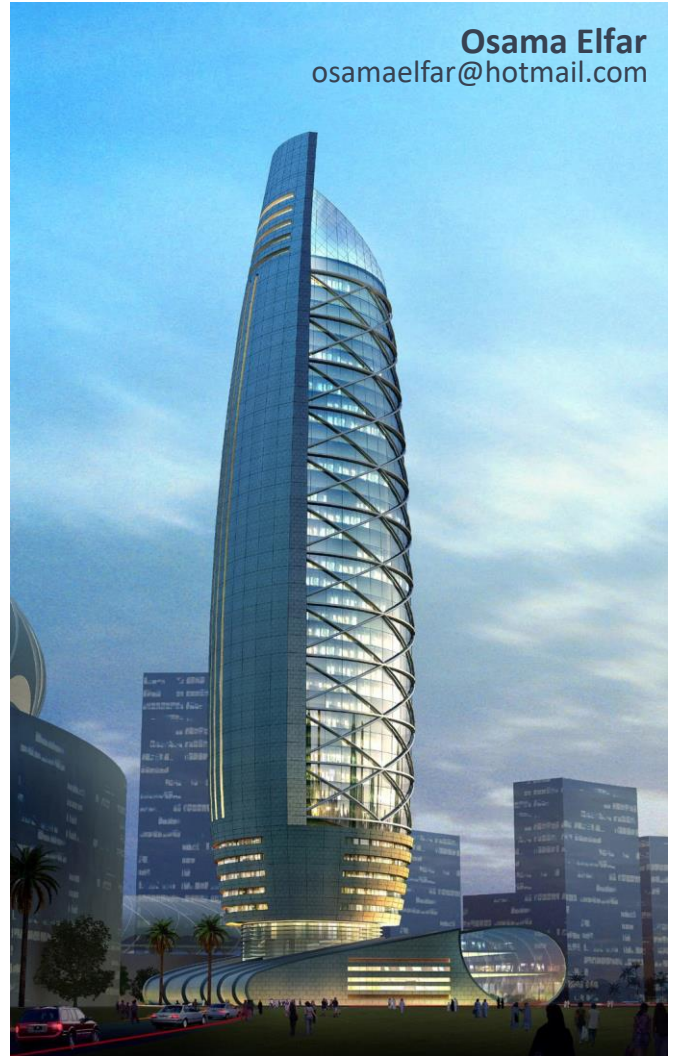
**Osama Elfar**

osamaelfar@hotmail.com

# DUBAI HEALTHCARE

The Idea for the tower came from the spine of the human being. This project is located within the heart of Dubai Healthcare City and shall stand out at the entrance as the main focal point. We studied different facade options and different architectural elements to ensure that this building will be a beacon and become a pioneer for others to follow.

Osama Elfar  
osamaelfar@hotmail.com

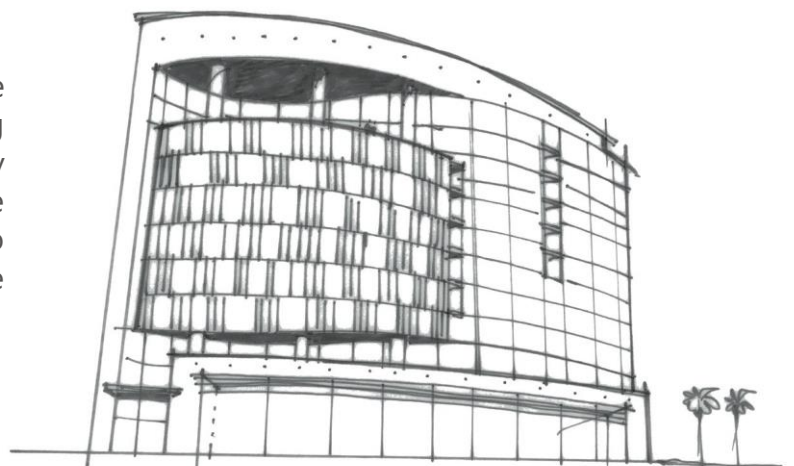
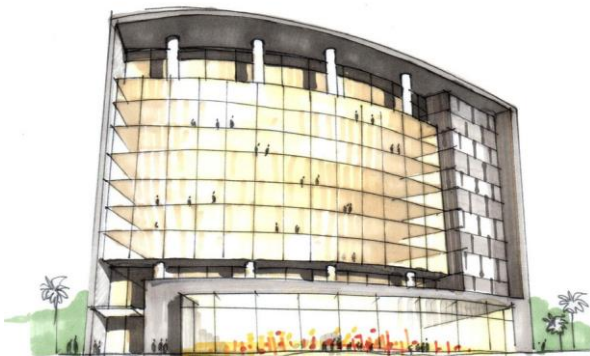
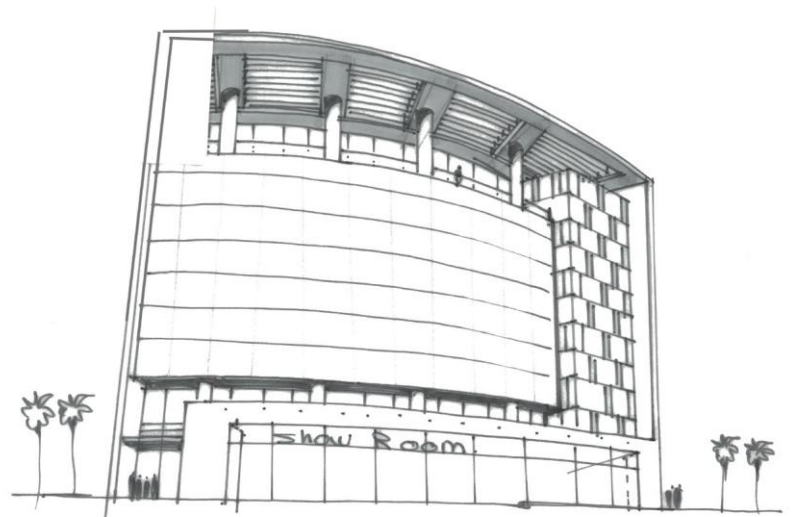


Osama Elfar

# HBK TOWER

Osama Elfar  
osamaelfar@hotmail.com

Situated in a prime location at the end of the business bank district in Doha, design team worked tirelessly to create more than 20 versions of the HBK tower in an effort to capture the image the client saw for this building. The final design incorporates 5 basements and a 10 story tower.



An additional challenge during the concept phase was selecting a cladding material that was not only maintenance-free and readily available for fast track construction but also aesthetically capable of providing the finish look the client desired.



The entrance could be seen from any location along the bank street and became a landmark for the district.

The floor plans are simple and flexible to provide different office sizes depending on the tenants' needs.

# ADAA HEADQUARTERS

Osama Elfar  
osamaelfar@hotmail.com

We were invited to participate in the design of the new Headquarters for the Abu Dhabi Accountability Authority. The site selected was surrounded on three sides by existing structures and the local codes allowed for only 60% lot coverage. Our challenge was to create a grand statement with the new headquarters building while working within the given constraints.



Our solution incorporated an 8-story tall grand gate which reflected the power of the Authority while creating a semi-enclosed inner plaza and provided natural lighting and views along the full depth of the building. The Executive Offices located above the gate were constructed of glass curtain wall providing 270 degree views.

The remaining building materials and colors were chosen to reflect the nature of the building function. Floor plans were developed to accommodate the different departments within the Authority while being sensitive to necessary adjacencies and shared services. Flexibility was incorporated into the office layouts so that inevitable changes could be executed without major reconstruction.

The inner sky plaza was designed as a centerpiece entrance for visiting VIPs. This building is an example of how creativity can be used to make a landmark building within a district of concrete 'boxes' all while conforming to demanding project constraints.

# Private Farmhouse

Osama Elfar

osamaelfar@hotmail.com

This VVIP luxury property was spread out over an expansive lot utilizing a contemporary style but incorporating the natural surroundings. Natural stones and timber elements were included in the design of the exterior facades. The interior design was focused around the new modern theories integrated with traditional stone cladding.

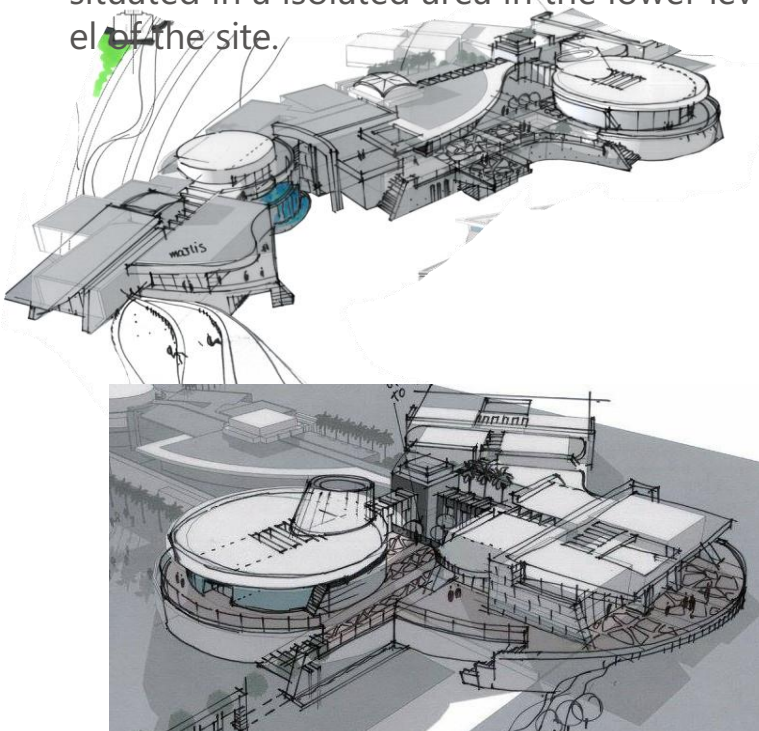


The acreage of the site accommodated the client's desire to have the farmhouse designed in three wings; the salons, the bedrooms and a royal suite. Each wing was allotted its own outdoor space with its own private garden. The swimming pool was situated in a isolated area in the lower level of the site.

Inner courtyards were incorporated into the design to provide natural daylighting and ventilation to each of the wings. This configuration also helps to control heat gain to all areas of the farmhouse during summer months.

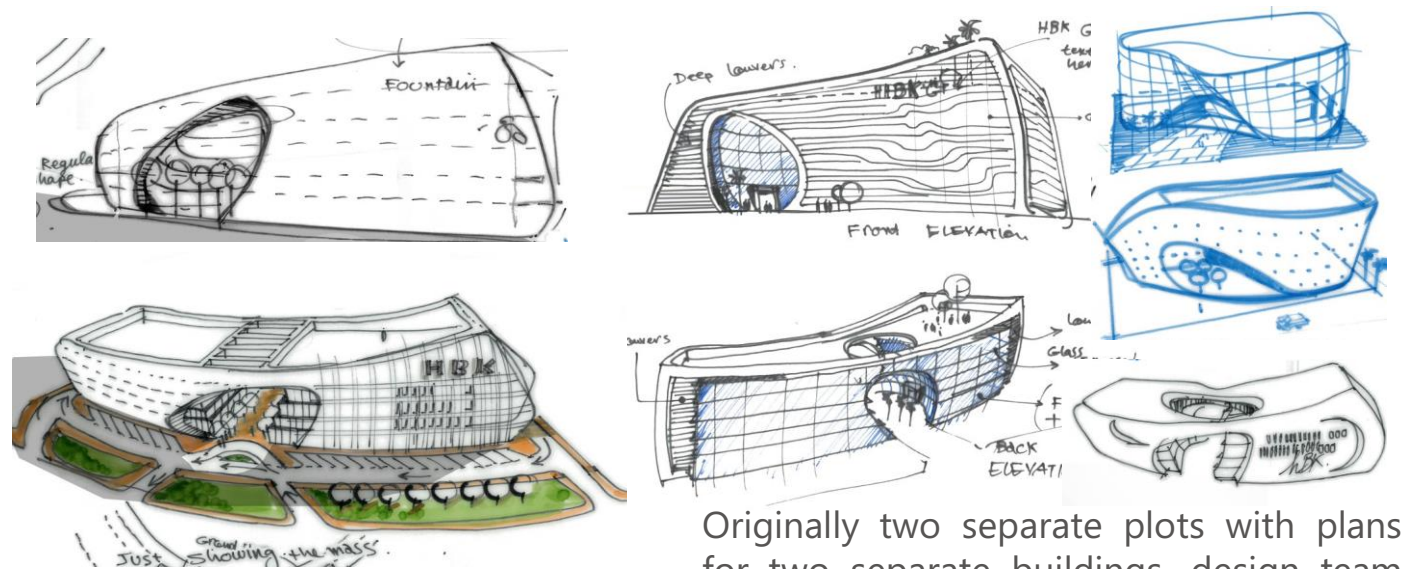
The service area for the farmhouse is isolated from the living quarters and provides a separate loading dock for the basement level Kitchen. The unique architectural approach to the farmhouse resulted in three distinctly different wings with connecting elements that bring harmony to the overall space.

Interior elements were carefully selected to provide a homey feel and a luxurious look to this beautiful residence.



# HBK PLAZA

Osama Elfar  
osamaelfar@hotmail.com

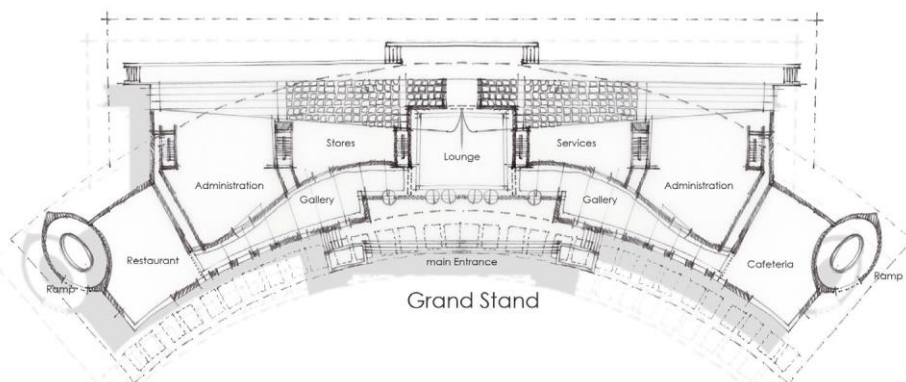
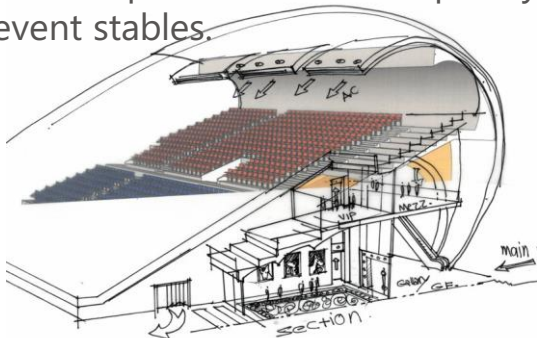


Originally two separate plots with plans for two separate buildings, design team worked with the client to create a joined building with a shared main entrance. HBK was planning on building one building for their headquarters and a separate building for rentable office space. We were able to show our client the impact that one joined building with a common entrance could have for their site. A 5-story entrance plaza cut into the design gives this headquarters a grand corporate image while separating the corporate function from the rentable office space. The impressive building skin was developed using a repeated pattern which gives the building a cohesiveness while controlling cost. Additionally, this building was designed under restrictive Lusail guidelines to ensure that the sustainability targets were met.

# AD Equestrian Club

Osama Elfar  
osamaelfar@hotmail.com

Design team was given the opportunity to participate in this prestigious project to renovate the existing club and create a state-of-the-art modern equestrian complex. The new complex would consist of a main outdoor arena surrounded by the existing stables and a new grandstand; a clubhouse and a new climate controlled indoor arena. Working with equestrian specialists and landscape designers, we were able to creatively develop the complex with the end users' operational objectives in mind. The complex includes shared spaces like media lounges, back of the house operations and temporary event stables.

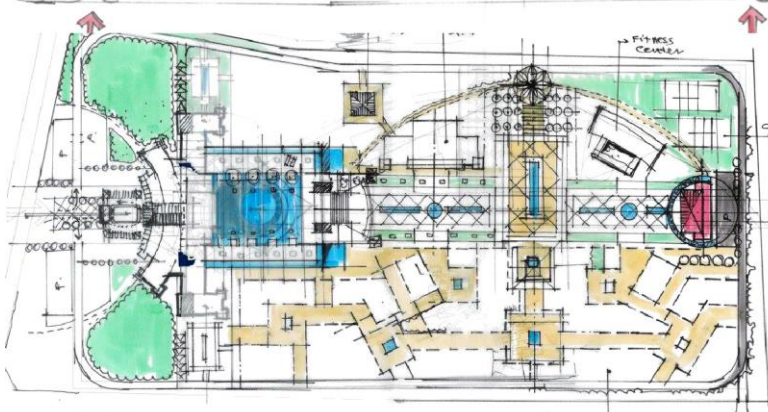
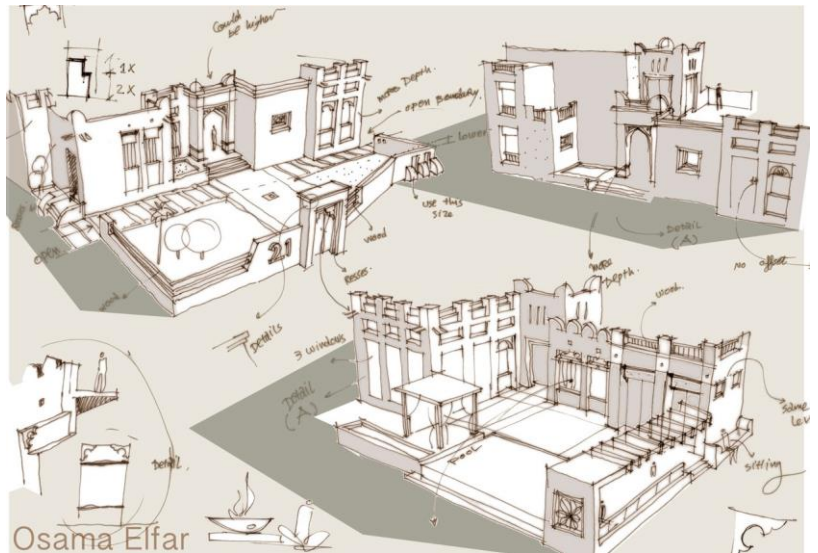
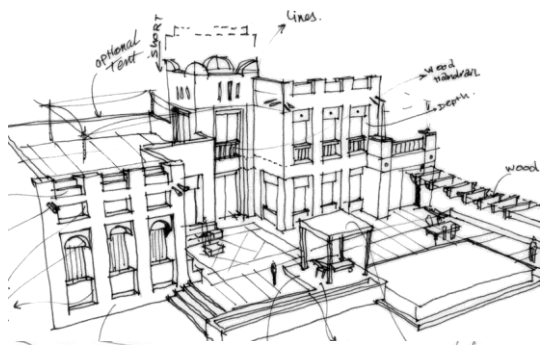


The complex was designed with the flexibility to accommodate different styles and sizes of events, a focus on the safety of the horses during movement between facilities and an outdoor arena with a central park instead of the traditional rectangular arena. All of these design features came from the desires of the end users.

# Messila 5 star Hotel

Osama Elfar  
osamaelfar@hotmail.com

The Al Messila 5 Star Hotel & Spa was designed to create an inspirational place for their members and guests to focus on healthy living. The resort includes fun inter-actational treatment facilities, state-of-the art fitness centers for every level and age group. Guests with chronic conditions are offered specialized treatment regimens that include nutrition advice. The resort amenities include 4 fine dining restaurants, 30 chalets and 220 guest rooms.



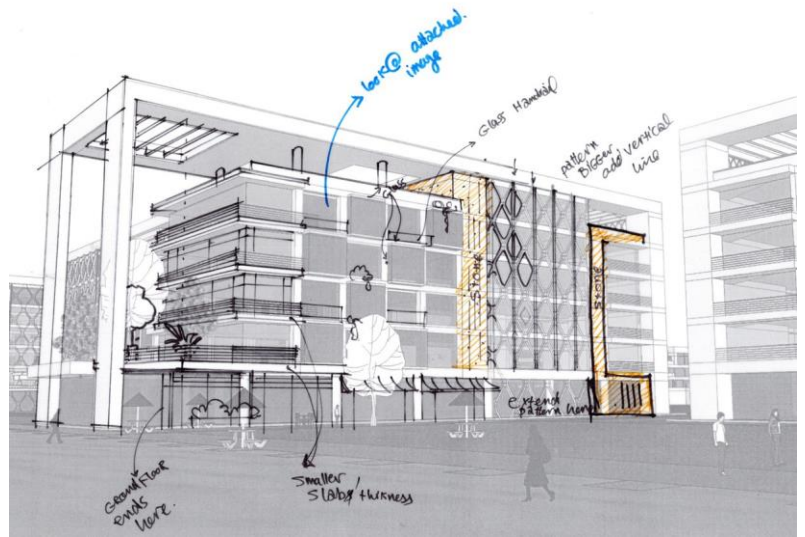
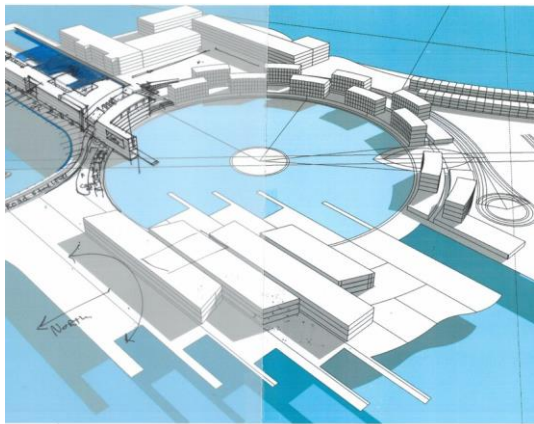
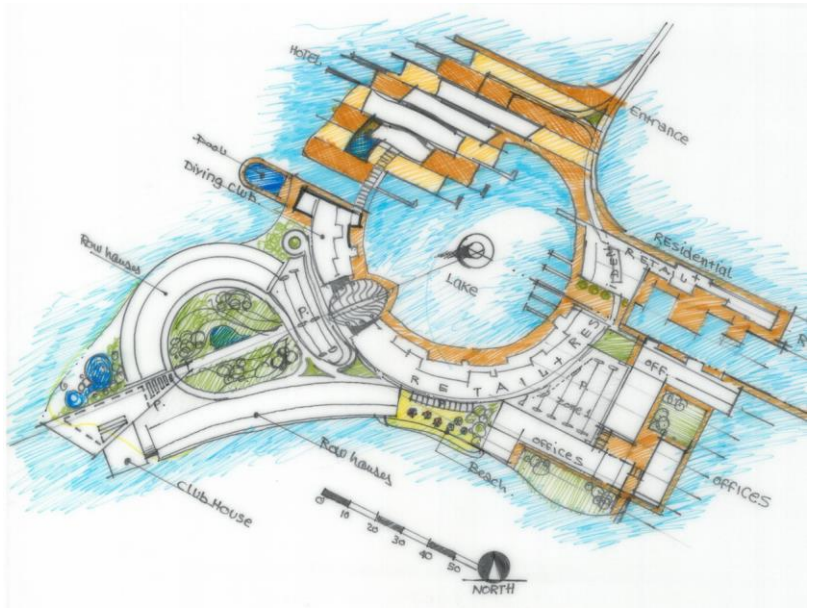
Our main challenge during the design was creating a cohesive resort complex that incorporated the privacy necessary for each guest. This was accomplished through the use of creative landscaping and private gardens for each villa for the outdoor spaces and separate circulation paths in the main building for guests and visitors.



# Nareel Island Dev.

Osama Elfar  
osamaelfar@hotmail.com

Design team was commissioned to prepare a study for this man-made island located near Abu Dhabi City. This island mixed use development was to contain retail, hospitality and commercial components. After receiving detailed information on the number of hotel rooms, retail spaces, office units and meeting spaces required for the development we were able to begin our master planning effort. Several options were created for the client to review and we were able to provide the pros and cons for those options so that an informed decision for the optimum arrangement could be completed.



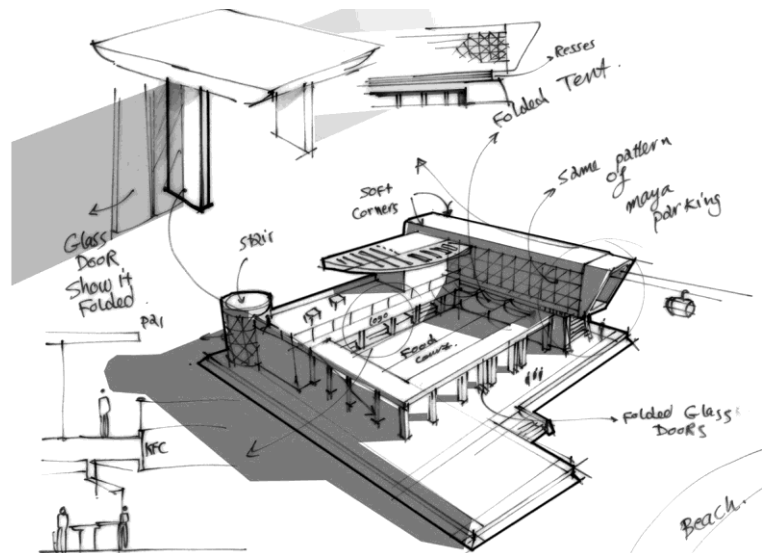
The Master Plan options all included a feature statement building to attract future tenants and owners in a highly competitive market. The planning focused on clear separation of uses between buildings while providing strong continuity throughout the development.



# Maya Island Terminal

Osama Elfar  
osamaelfar@hotmail.com

The terminal buildings designed for the luxurious Maya Island Resort are the destination landings for the world's longest cable car ride as documented by the Guinness Book of Records. These mixed-use buildings contain the embarkment stations, gift shops, ticketing stations, waiting areas, food outlets and observation decks. These buildings are the main architectural elements in the development and utilize a modern dynamic shape to create the aesthetic attraction.



These waterfront buildings invite a variety of activities including sightseeing, dining, shopping and adventure seeking. They even include outdoor playing areas for children. The interior space was designed with a welcome area styled after the Maya Island villas so that first time visitors can get an idea of what to expect when they reach their final destination.

Design team provided a feasibility study containing multiple options for the design of the buildings along with the pros and cons for each of those options. The client was able to review those options and select the one that most closely aligned with the priorities for the development.

## SKETCHES & DIGITAL PAINTING

Osama is exceptionally talented in freehand drawing, coloring, and digital painting, utilizing various media and tools. His sketches are globally acclaimed and serve as showcases in architectural sketching, influencing architects and students in their creative thinking processes.

He employs manual sketching to explore diverse configurations for floor plans, massing, and materials, progressing from initial sketches to the final design. This approach offers limitless opportunities to achieve the desired design outcome.

